



The KAS-20 Software provides AVL and Dispatch capability compatible with Kenwood digital radio systems. With the capability to run under Windows and Windows Server operating systems, it provides a cost effective package for AVL and dispatch for business, supporting both the NXDN and DMR digital protocols. The graphical user interface and map display are intuitive to the user allowing seamless operation for the control of multiple subscriber units on a network or the ability to work with multiple clients with the server configuration. Additional licenses allow the user to add features as needed as their system grows.

PRODUCT HIGHLIGHTS

- Low-Cost Initial Investment with Upgrade licenses
- Enhanced Scalability – Standalone PC / Multi-Client Server
- Enhanced User Interface Design for ease of use
- Supports multiple digital radio protocols
- User-Selectable Options – Location, Dispatch, Voice Path, Multiple Client, and Voice Recording

BASIC FEATURES

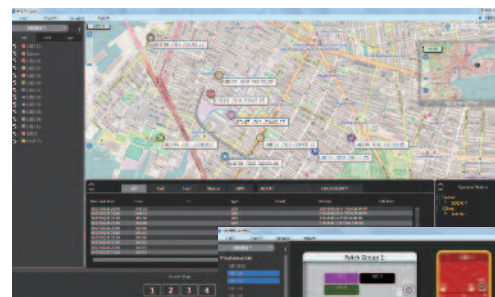
- Multi-role Dispatch Functionality
 - IP Voice Dispatch
 - Location Management
 - Call / Event Logging
 - Voice Record / Playback
- Multiple IP Interfaces
 - DMR Conventional
 - NXDN Conventional
 - NXDN Type-C Trunking
 - NXDN Type-C Gen2 Trunking
- Optimized GUI
 - User defined Call Windows / Patch Window
 - Editable Map Icons
 - Shortcut / Key binding
- Asset List
 - Import / Export Asset Lists
 - Manual / Auto List Creation

LOCATION MANAGEMENT FEATURES

- Location Management – 1000 subscribers
- OpenStreetMap and Scanned Maps Supported
- Reporting – Auto, Manual Poll, Loneworker, GeoFenced
- Position – Record / Playback

DISPATCH & VOICE RECORDING FEATURES

- Available Call Types
 - Talk Group / Channel
 - Individual
 - Console
- Definable Call Windows
 - Individual, Talk Group, Console with Priority
 - Adjustable Volume / Mute per Window
 - UID / Alias Display
 - Color / Size
- Embedded AMBE+2 Vocoder
 - Capable of eight (8) simultaneous talk paths
- Voice Recorder
 - Record / Playback
 - Stored as AMBE+2
 - Quick Replay
 - MP3 Export
- Software Voice Patch
 - Type-C only; Same System Only



Main AVL screen



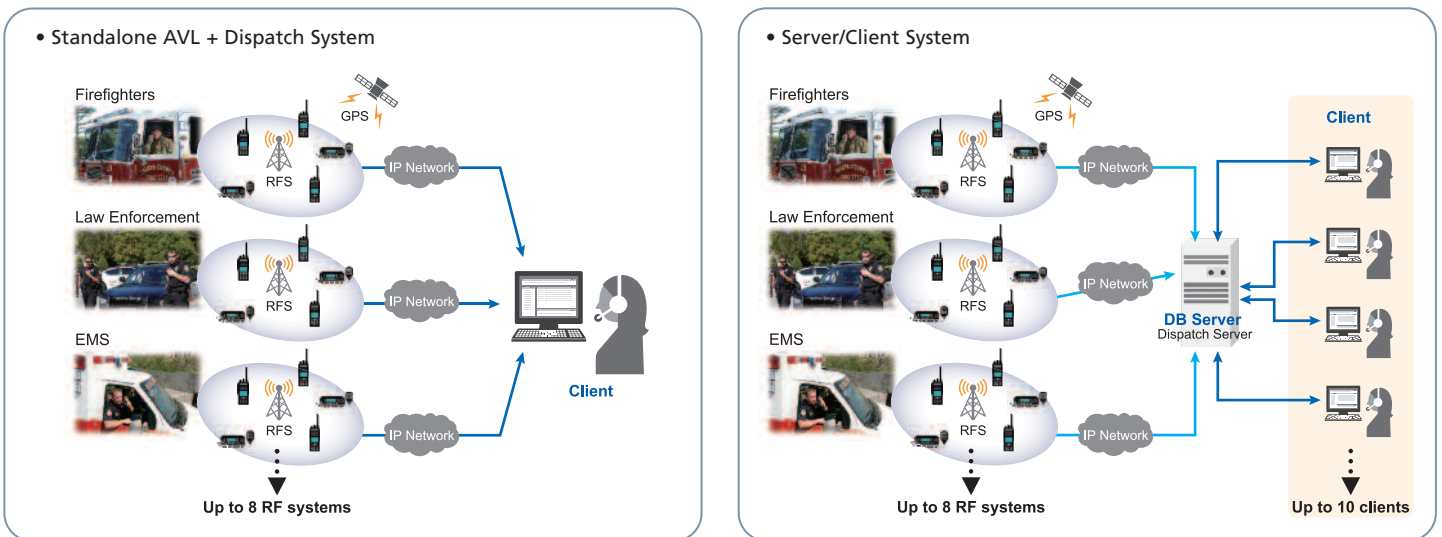
Main Dispatch screen

SYSTEM REQUIREMENTS

	DISPATCH CLIENT SOFTWARE KAS-20C	DISPATCH SERVER SOFTWARE KAS-20S
Operating System	Microsoft Windows 7, 8.1, 10 (works on 32bit & 64bit OS)	Microsoft Windows 7, 8.1, 10 and Windows Server 2008R2, 2012R2 (works on 32bit & 64bit OS)
Processor	3.0 GHz Intel Core i5 CPU or faster	
RAM	4 GB or more	
Hard Disk Space	500 MB free space or more	50 GB free space or more
Network	1 Ethernet Port / 100BASE-T and Internet connection	
Display	1920 x 1080 or higher resolution	1024 x 768 or higher resolution
Other	Requires Microsoft .NET Framework 4.5 or 4.6 Requires Microsoft SQL Server 2014 / 2014 Express In/Out Devices: Speaker, Keyboard, Mouse, Microphone	

CONFIGURATIONS

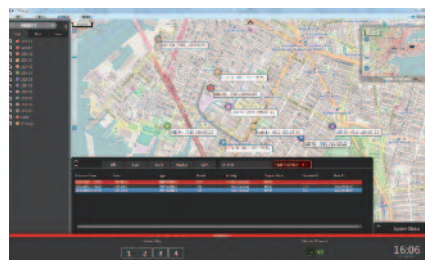
Both systems can be flexibly customized with licensing to meet user needs.



AVL & DISPATCH SCREENS



AVL: Unit Operation



AVL: Emergency-2



Dispatch: List Display

Specifications are subject to change without notice, due to advancements in technology.
 NXDN® is a trademark of JVCKENWOOD Corporation and Icom Inc.
 NEXEDGE® is a registered trademark of JVCKENWOOD Corporation.
 OpenStreetMap® is open data, licensed under the Open Data Commons Open Database License (ODbL) by the OpenStreetMap Foundation (OSMF).
 Microsoft, Windows, and SQL Server are trademarks, or registered trademarks of Microsoft Corporation in the U.S. and/or other countries.
 Intel and Core are trademarks of Intel Corporation in the U.S. and/or other countries.
 All other trademarks are the property of their respective holders.

KENWOOD

JVCKENWOOD USA Corporation
 Communications Sector Headquarters
 3970 Johns Creek Court, Suite 100, Suwanee, GA 30024-1265
 Order Administration/Distribution
 P.O. BOX 22745, 2201 East Dominguez St., Long Beach, CA 90801-5745
www.kenwood.com/usa

JVCKENWOOD Canada Inc.
 Canadian Headquarters and Distribution
 6070 Kestrel Road, Mississauga, Ontario, Canada L5T 1S8
www.kenwood.com/ca



ISO9001 Registered
 JVCKENWOOD Corporation